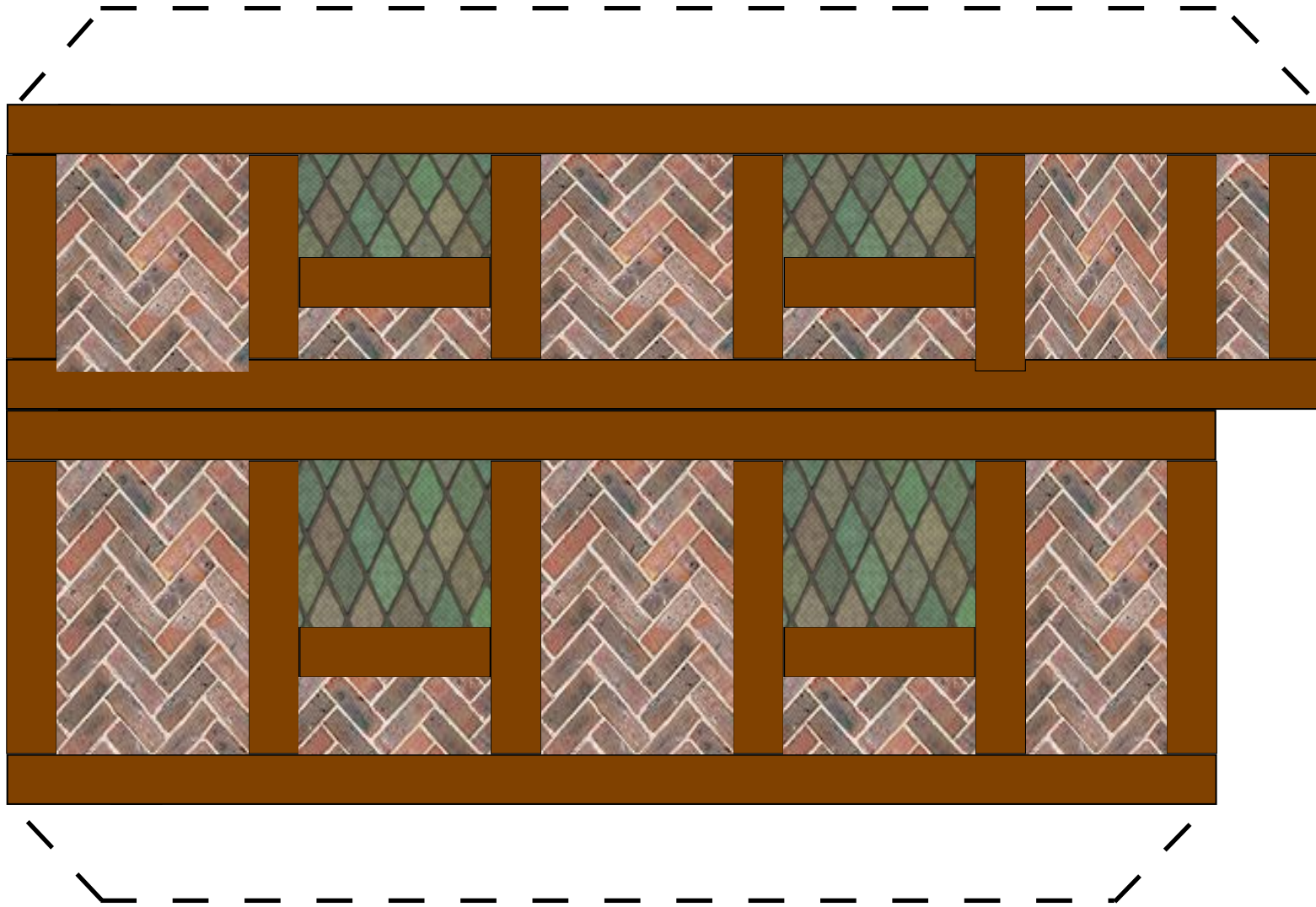
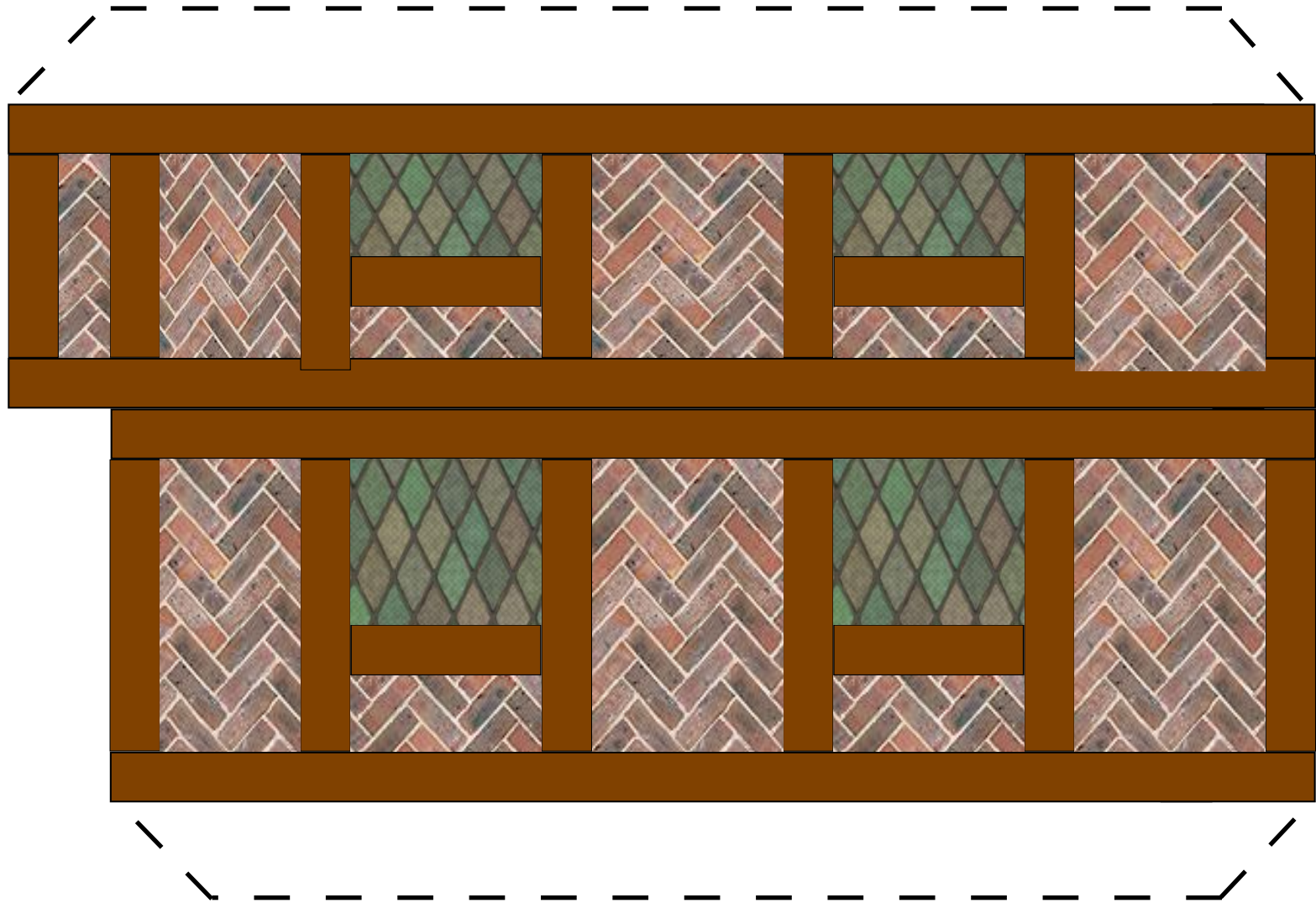


Tudor style house with 'Jetty' - version 1

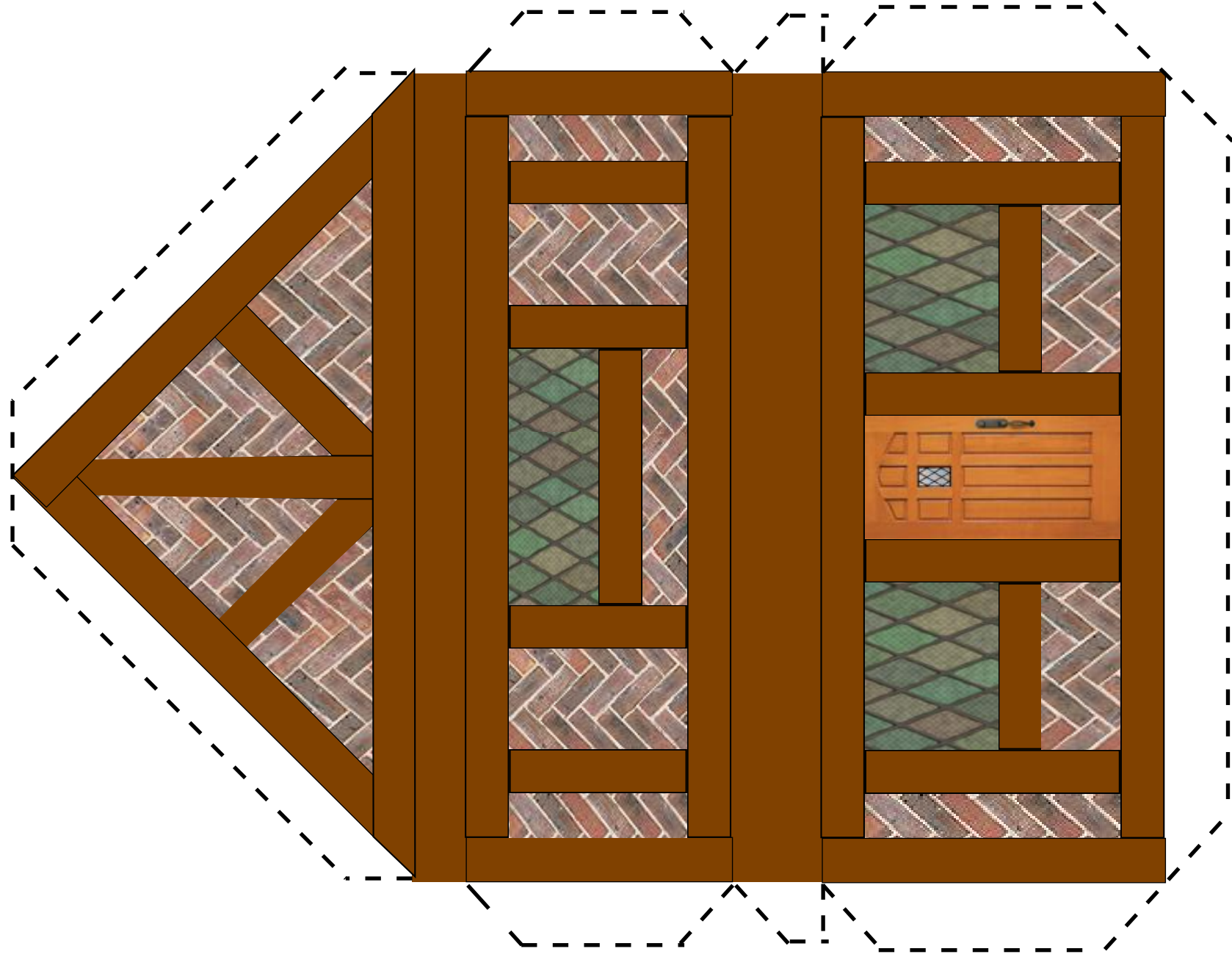




House Side 1 - print full size (206mm x 110mm)
(then glue on card or print directly on thin card)



House Side 2 - print full size (206mm x 110mm)
(then glue on card or print directly on thin card)



House Fronts - print full size
(then glue on card or print
directly on thin card)



Roof Slates - print 2 sheets full size (216mm x 100mm)
(then glue on card or print directly on thin card)

